

**ELMO**

V.le Certosa 8/B - 27100 Pavia Italy

Tel. ++39 382 529564 - 422372

Fax. ++39 382 527041

E-Mail: info@elmoitaly.com

SUBMERSIBLE MOTORS FOR HYDRAULIC LIFTS

UNTEREELMOTOREN FUER HYDRAULISCHE AUFZUEGE

MOTORI IMMERSI PER ASCENSORI IDRAULICI

Tab.  
S - Cap. 1002-09  
C

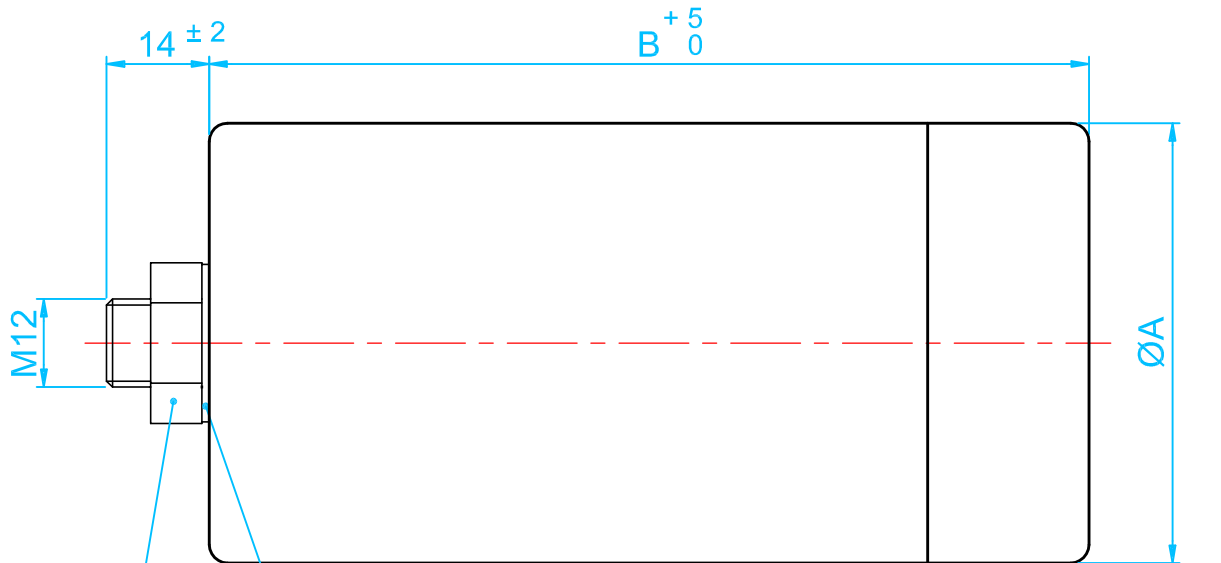
IN ANY MOMENT AND WITHOUT NOTICE ELMO CAN CHANGE MANUFACTURING PROCESS, PERFORMANCE FEATURES.

LA ELMO S.r.l. SI RISERVA IL DIRITTO DI APPORTARE QUALSIASI VARIAZIONE SENZA ALCUN PREAVVISO.

TABLE CAPACITOR for: 2 Poles - Single Phase Motors - Size 3 - Without Flywheel

| VOLTAGES    | NOMINAL OUTPUT |     | Q.TY, COMBINATION<br>AND CAPACITORS' TYPE     | TOTAL CAP. VALUE       |    |     | CAPACITORS'<br>DIMENSIONS (mm) |   |
|-------------|----------------|-----|---|------------------------|----|-----|--------------------------------|---|
|             |                |     |   | $\mu\text{F}$<br>450Vo | A  | B   | A                              | B |
|             | HP             | KW  |   |                        |    |     |                                |   |
| 230 V 50 Hz | 1,6            | 1,2 | N°1 70 $\mu\text{F}$                          | 70                     | 55 | 155 |                                |   |
|             | 2              | 1,5 | N°1 70 $\mu\text{F}$                          | 70                     | 55 | 155 |                                |   |
|             | 3              | 2,2 | N°1 100 $\mu\text{F}$                         | 100                    | 55 | 155 |                                |   |
|             | 4              | 2,9 | N°2 60 $\mu\text{F}$                          | 120                    | 55 | 120 |                                |   |
|             | 5              | 3,7 | N°2 70 $\mu\text{F}$                          | 140                    | 55 | 155 |                                |   |
|             | 6,5            | 4,8 | N°1 100 $\mu\text{F}$<br>N°1 80 $\mu\text{F}$ | 180                    | 55 | 155 |                                |   |
|             | 8              | 6   | N°1 70 $\mu\text{F}$                          | 230                    | 55 | 155 |                                |   |
|             |                |     | N°2 80 $\mu\text{F}$                          |                        |    |     |                                |   |

| VOLTAGES          | NOMINAL OUTPUT |     | Q.TY, COMBINATION<br>AND CAPACITORS' TYPE    | TOTAL CAP. VALUE       |    |     | CAPACITORS'<br>DIMENSIONS (mm) |   |
|-------------------|----------------|-----|--|------------------------|----|-----|--------------------------------|---|
|                   |                |     |  | $\mu\text{F}$<br>450Vo | A  | B   | A                              | B |
|                   | HP             | KW  |  |                        |    |     |                                |   |
| 220 - 230 V 60 Hz | 2              | 1,5 | N°1 80 $\mu\text{F}$                         | 80                     | 55 | 155 |                                |   |
|                   | 2,4            | 1,8 | N°1 80 $\mu\text{F}$                         | 80                     | 55 | 155 |                                |   |
|                   | 3,6            | 2,6 | N°1 100 $\mu\text{F}$                        | 100                    | 55 | 155 |                                |   |
|                   | 5              | 3,7 | N°2 70 $\mu\text{F}$                         | 140                    | 55 | 155 |                                |   |
|                   | 6              | 4,4 | N°2 80 $\mu\text{F}$                         | 160                    | 55 | 155 |                                |   |
|                   | 8              | 6   | N°2 70 $\mu\text{F}$                         | 220                    | 55 | 155 |                                |   |
|                   |                |     | N°1 80 $\mu\text{F}$                         |                        |    |     |                                |   |
|                   | 10             | 7,4 | N°1 100 $\mu\text{F}$                        | 250                    | 55 | 155 |                                |   |
|                   |                |     | N°1 80 $\mu\text{F}$<br>N°1 70 $\mu\text{F}$ |                        |    |     |                                |   |

External toothed lock washer  $\text{Ø}12.6$  DIN 6797 A

Thin hexagon nut M12 DIN 936

